

# PHG Member Projects

*December, 2021*



# Dan Steves

*Alpaca Scarves*

# Janis Johnson

*Table runner with motifs from Swedish textile art*

*Weave structure: Summer and Winter*

*Woven on Louet Megado 16-shaft mechanical dobby loom*

*Warp: 10/2 mercerized cotton*

*Pattern weft: 5/2 mercerized cotton*

*Tie-down weft: 24/2 mercerized cotton*

*All of the pattern weft is from Kathy Sengenberger's stash.*



# Janis Johnson

*Table runner with motifs from Swedish textile art*

*Weave structure: Summer and Winter*

*Woven on Louet Megado 16-shaft mechanical doobby loom*

*Warp: 10/2 mercerized cotton*

*Pattern weft: 5/2 mercerized cotton*

*Tie-down weft: 24/2 mercerized cotton*

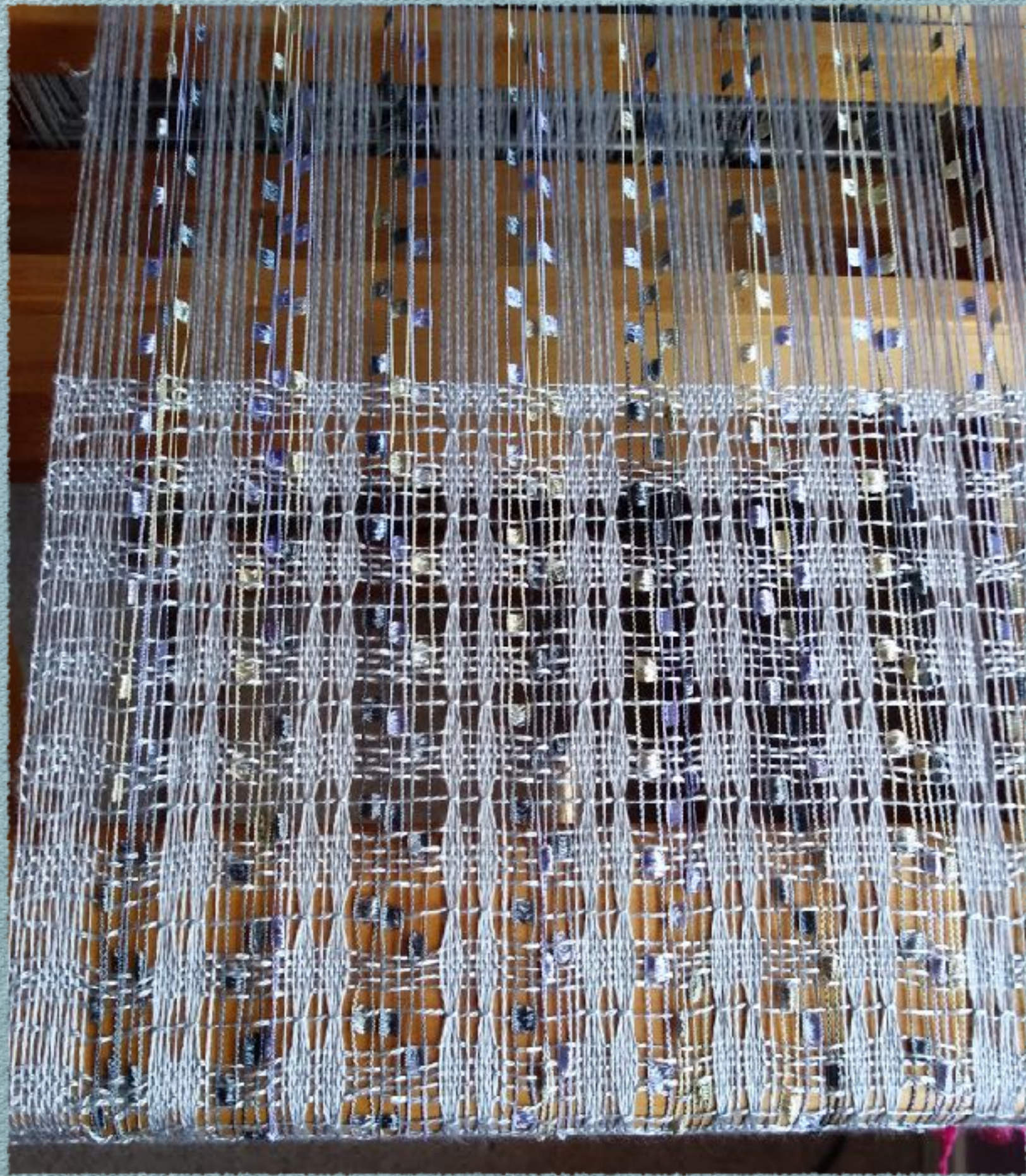
*All of the pattern weft is from Kathy Sengenberger's stash.*





# Robin Korybski

*From the Tien Chu and Janet Dawson free webinar last year. I choose a red warp in 10/2 cotton. Out of my comfort zone. After finishing the mug rugs, I made them into Christmas ornaments with polyfil and ribbon in my stash.*



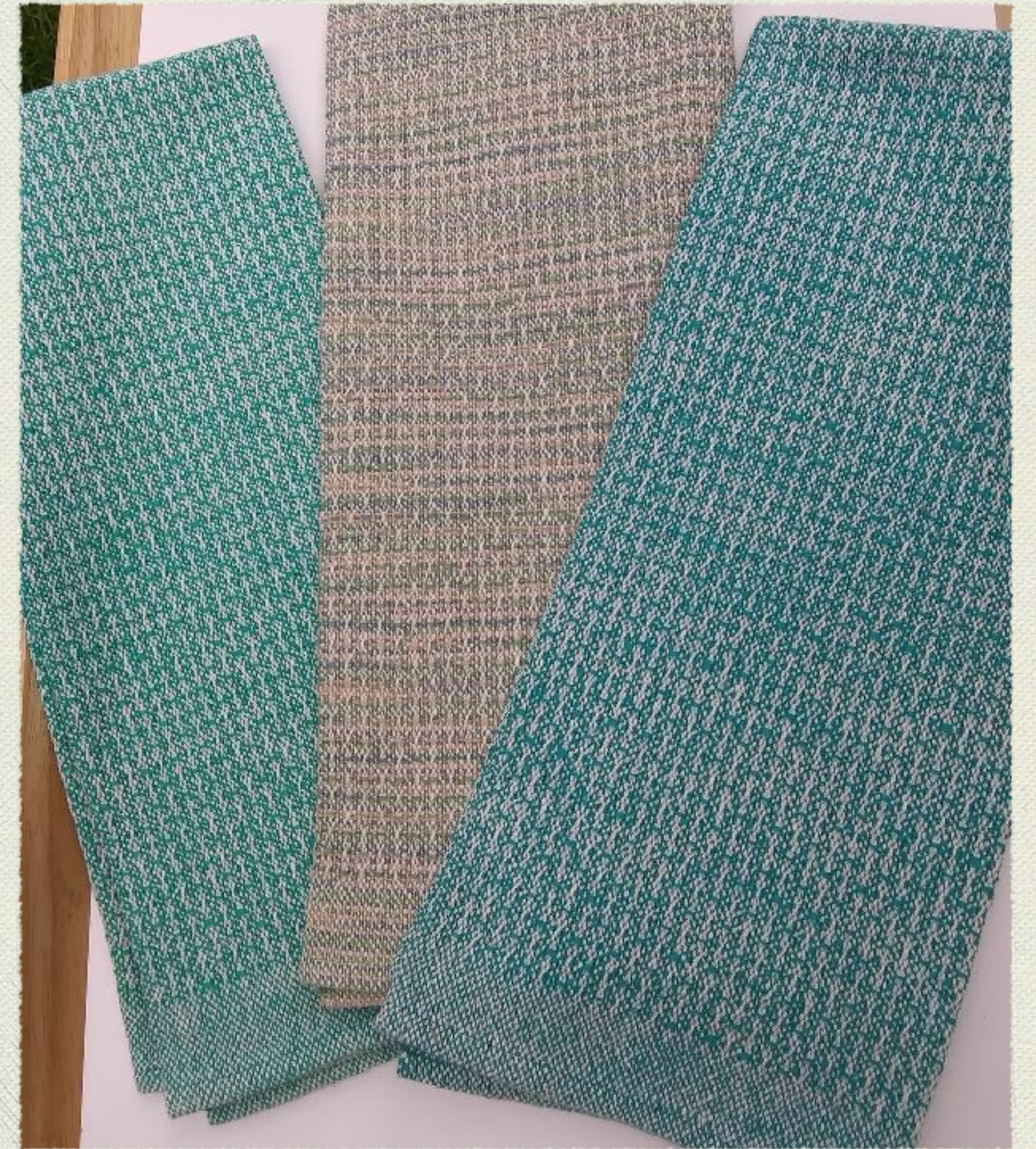
# Robin Korybski

*Brooks Bouquet scarves - Pattern is from the book Interlaced by the Weavers Guild of Boston*

*Yarns: 8/2 Tencel @ 24 epi, Trellis/Ladder Yarn @ 6 epi*

# Blithe Jensen

At Kathy Sengenberger's yarn estate sale I bought 6 colors of cotton flake yarn which I, of course, turned into towels: Emerald, Printed Softball, Jade.



# Blithe Jensen

*These are Port Flake, Salt & Pepper, and Mescal. So far I've woven 40 towels from the 6 cones, with more of the Emerald and Jade when I finish with a minimum of 4 each of the 22 colors I had just restocked.*







# Miriam Eskenasy

*Two Tencel Scarves*

Debbie Ellis

Maiwa Natural Dye Class





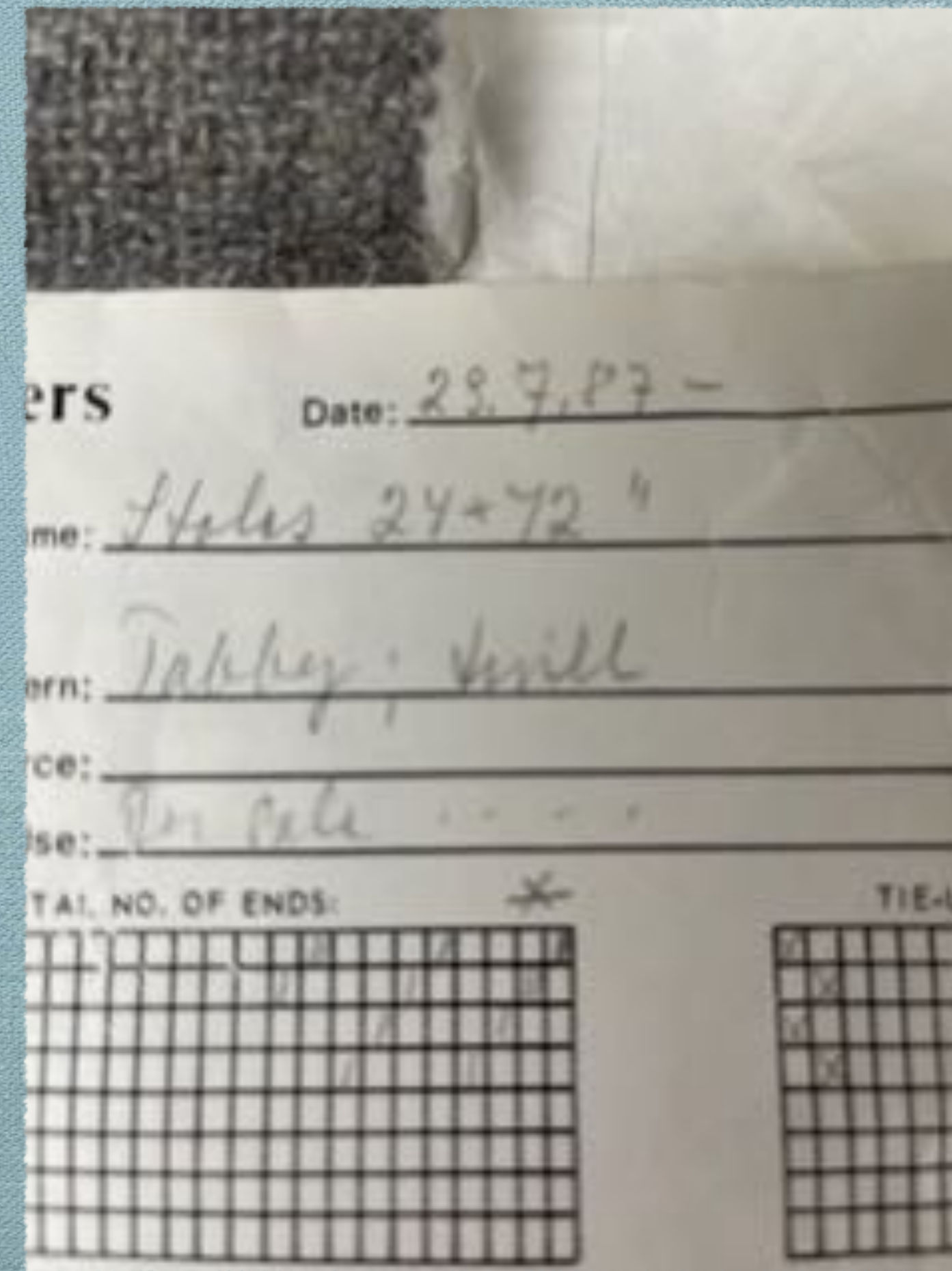
# Eva Douthit

*Double weave placemats inspired by Pat's show and tell last month and small garden table cloth thinking about warm, mellow summer days*

# Sue Walsh

This was a project designed in July 1987 by Görel Kinersley. She designed the shawl, did a wrap of the stripe pattern, sampled, and then put the warp yarns (Harrisville wool singles) in a bag where they languished for 35 years. After she died, I said I would weave it. She intended to use handspun wool singles for weft, so I used some of mine that had been sitting around in a different bag for at least a couple decades. I set the warp at 12epi for a straight draw on 4 shafts, wove a simple twill, did a row of half-Damascus knots and a twisted fringe, washed in Dawn and warm water, tumbled low then lay flat to dry, and finished with a light pressing. It feels fabulous





# Sue Walsh

*Görel Kinersley designed shawl*

# Lynne Fitzsimmons

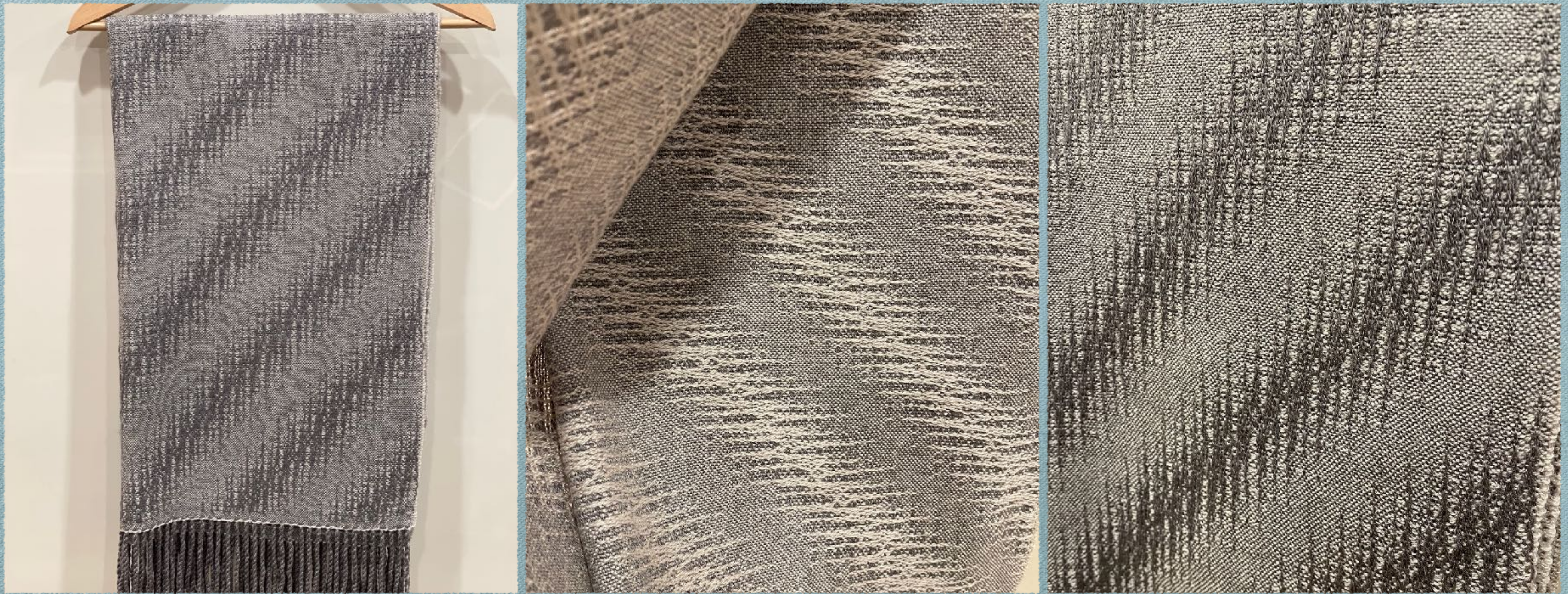
- ◆ Gorgeous Gradients class combined with Shadow Weave
- ◆ The gradient is a Fibonacci Fade, yellow-lt green-med blue-lt blue-lilac with dark blue, both in the warp and weft.
- ◆ Draft can be found in Strickler (A Weavers Guide to 8-Shaft Patterns) #282 and #285 OR Powell (1000+ Patterns in 4, 6, and 8 Harness Shadow Weaves), 8-19-1 and 8-19-11.





# Lynne Fitzsimmons

*Gorgeous Gradients class combined with Shadow Weave*



# Sarah McCully-Posner

*Sam's Wrap*

*This is a wrap using a draft from Handweaving.net (#75794).*

*I used Jagger spun Zephyr (50/50 Merino wool/silk) in steel and mushroom. 8-shaft pattern.*

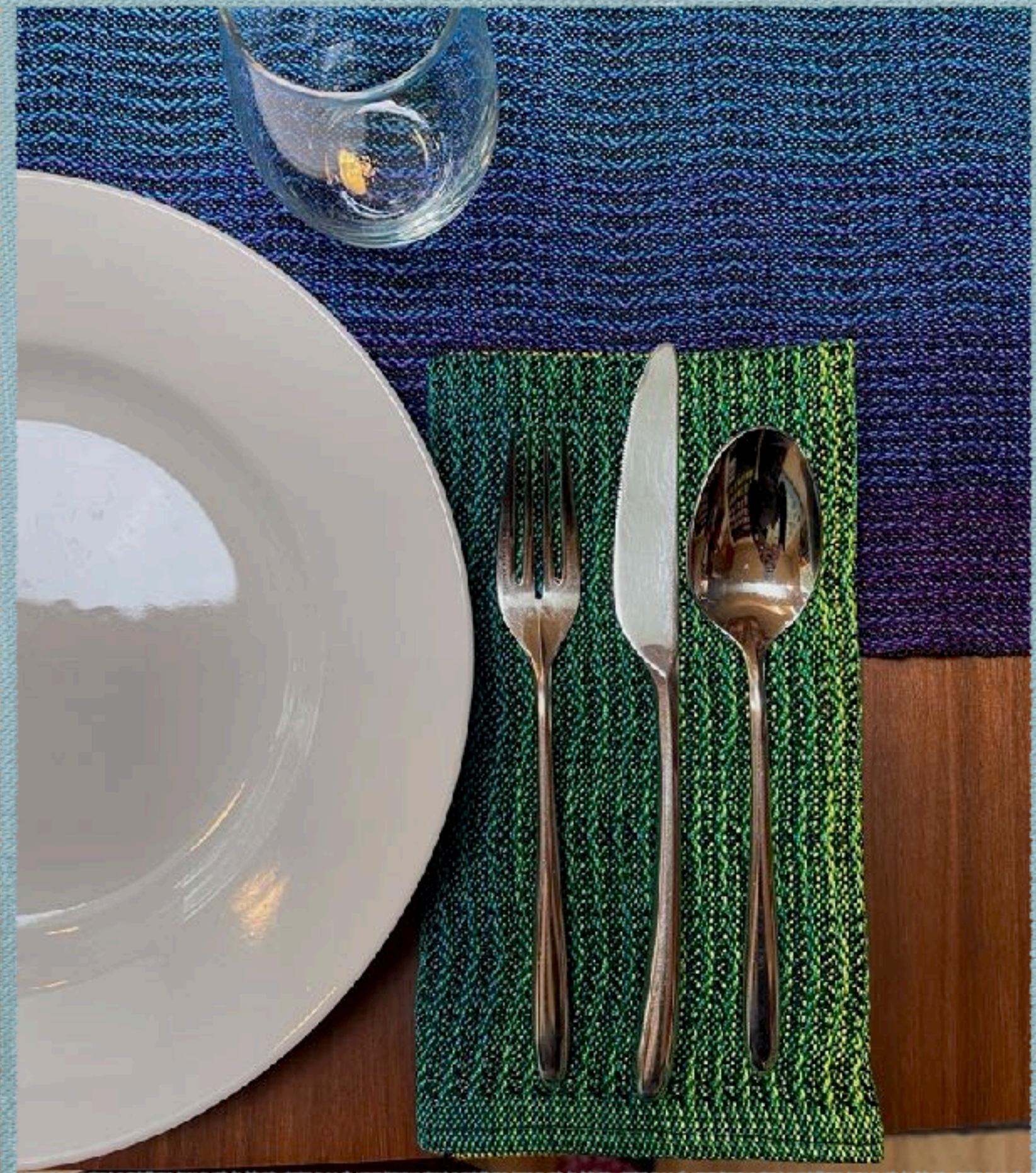




# Sarah McCully-Posner

*“You are useful” Towels*

*I created a name draft to design these towels using the phrase “you are useful” which is a joke among a group of my friends (although we joke, we are all so useful!). These are 8/2 cotton. 4-shaft draft.*



# Sarah McCully-Posner

*Dancing Diamonds Shawl (or table runner)*

*I used 10/2 Pearl Cotton (Lunatic Fringe) for this project and created a gradient using the skills I have learned from other projects. The draft is from Handweaving.net (#75578).*



# Sarah McCully-Posner

*The Buckles Cowl*

*This draft came from the Strickler book (#556) and I used 20/2 cotton in the weft and the tabby and 8/2 Tencel for the pattern in 3 colors. 8-shaft draft.*