



*Portland
Handweavers
Guild*

JANUARY 14, 2021

Carly Mick



Carpet with linen warp &
hand-dyed wool weft





Sue Walsh

Egyptian Goddess Dress for Nancy Hoskins

2020 project for the
Complex Weavers
Archaeological Textiles
Study Group.



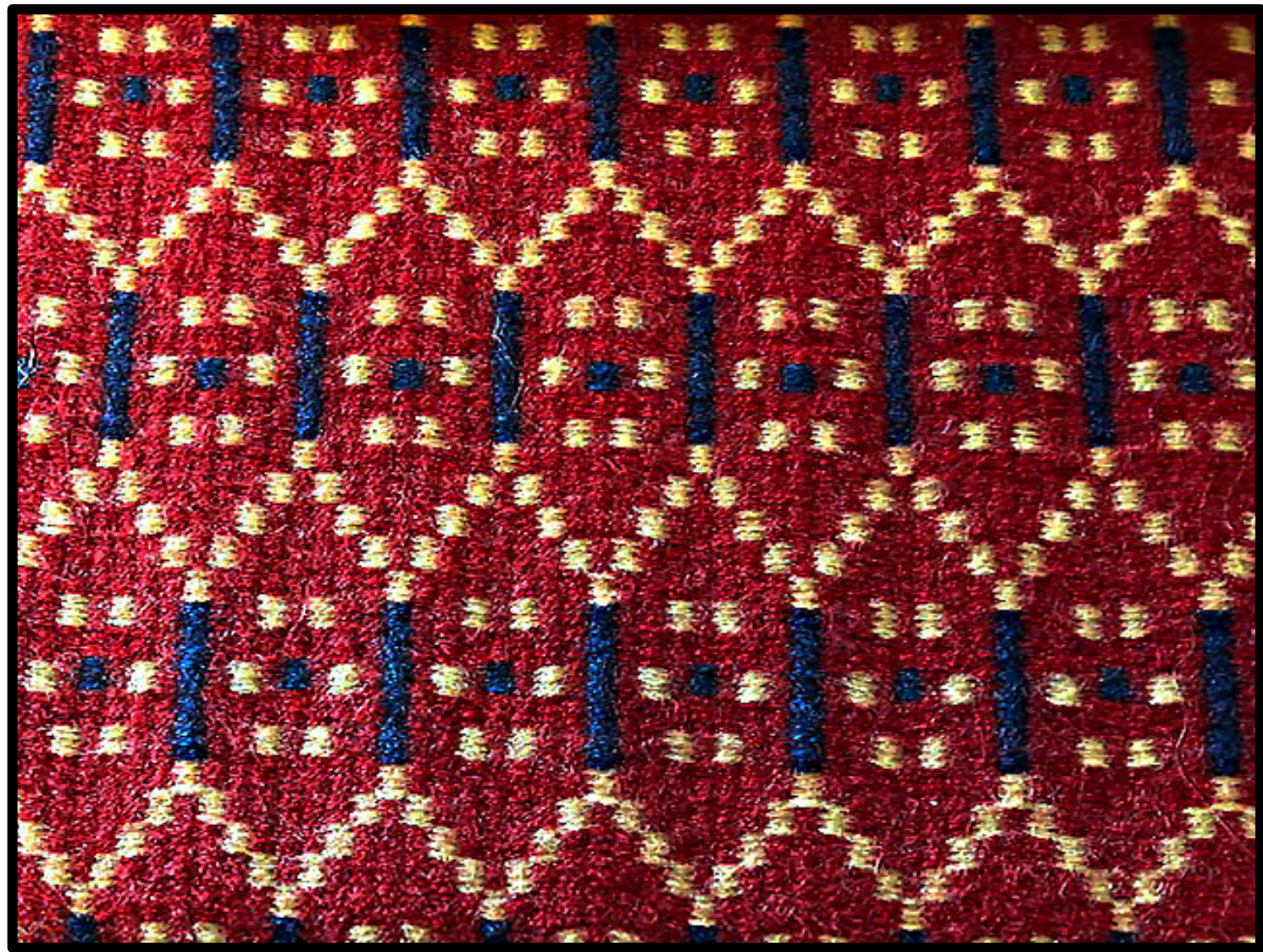
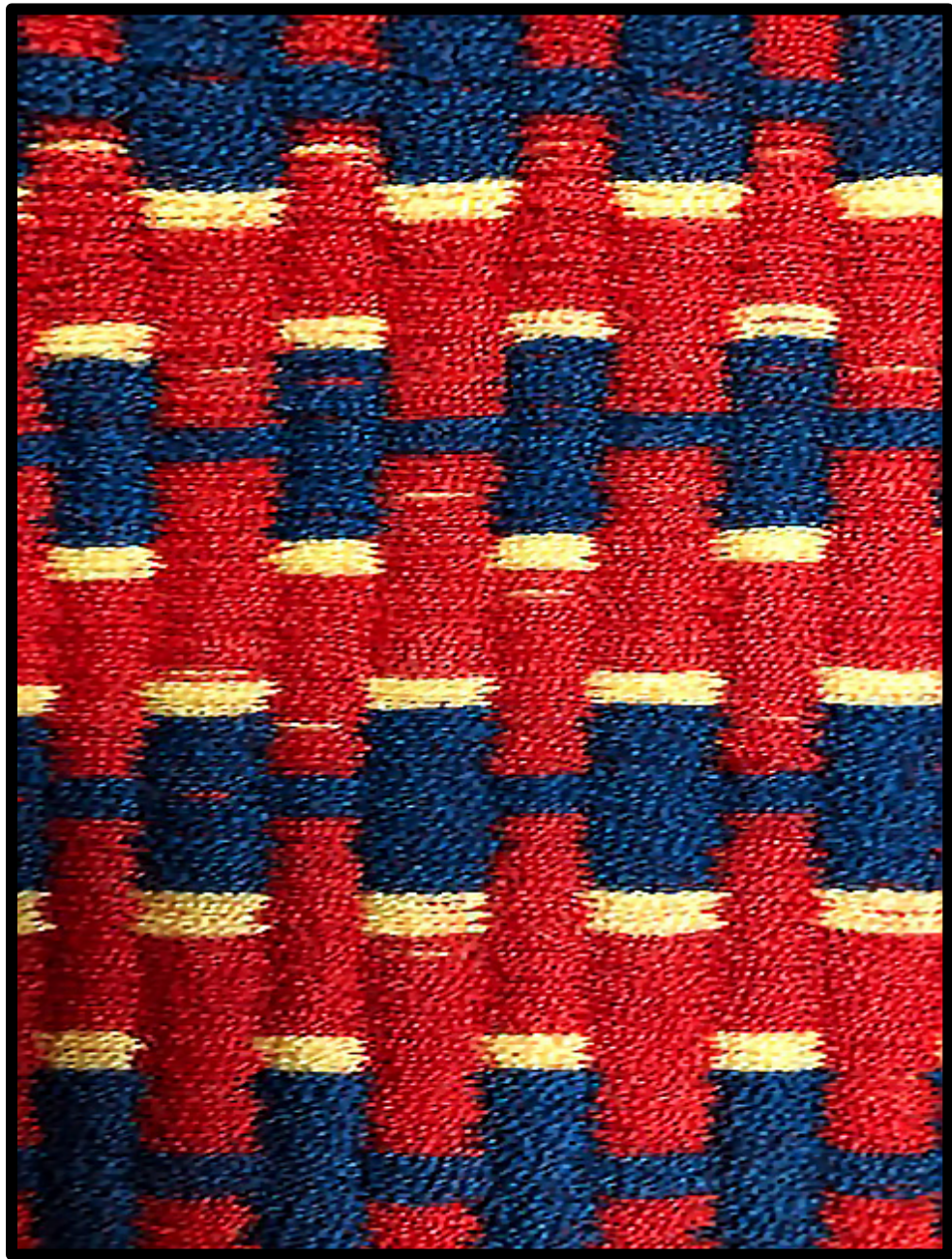
Nancy spoke in 2019 for a program on "Ephemeral Textiles"

Warp is 40/2 linen (2 as 1) set at 8epi, weft is 20/2 Mora wool (3 as 1)



Side seam for the panel, finishing and protecting the edges using half-Damascus knots and "tunneling" the warps, back side showing the floats





Greta Holmstrom

Solar System

Pin loom woven on
Elongon Turtle Loom

DK-weight yarn

The outer planets
feature beadwork
for their rings.

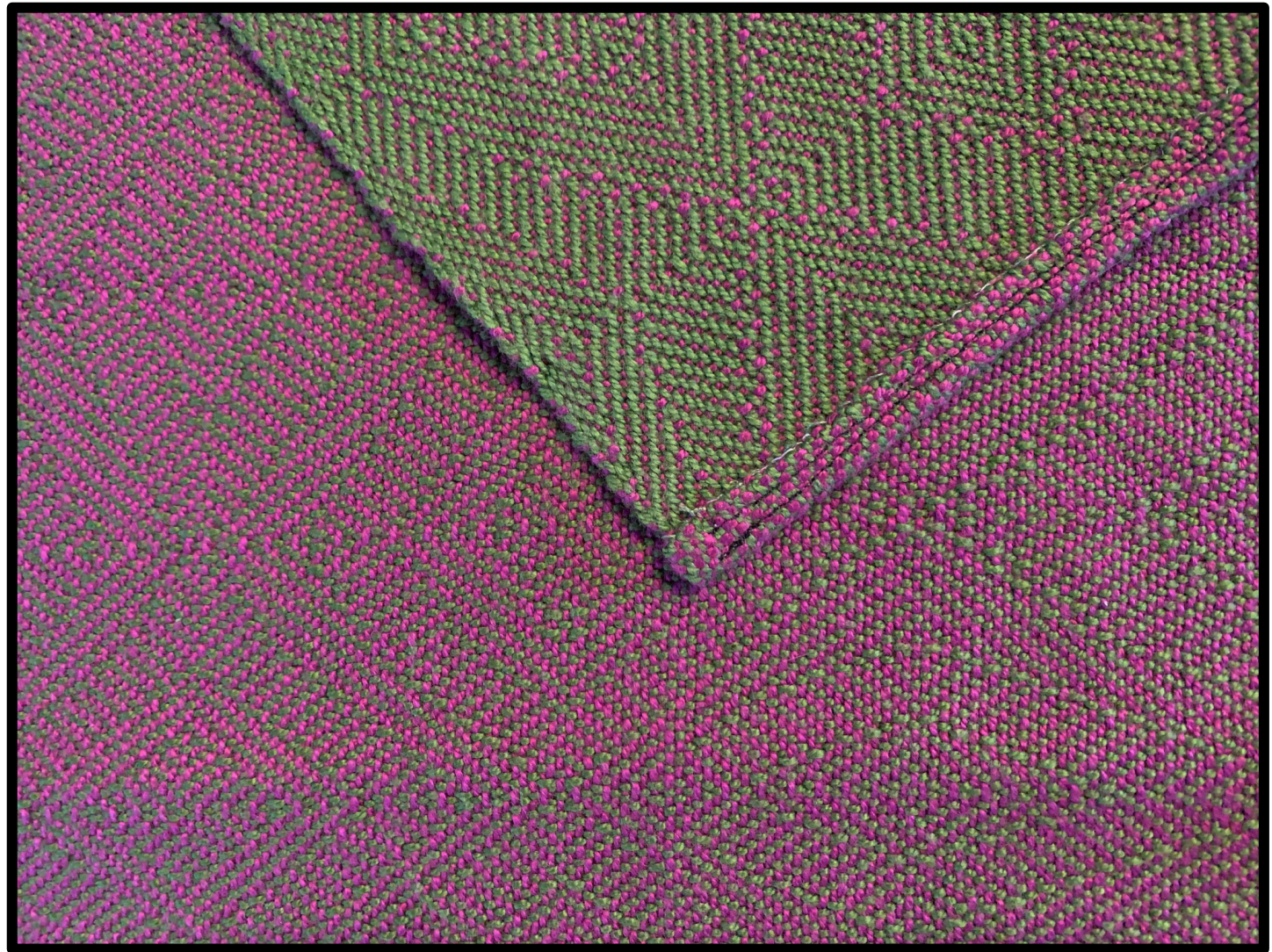


Laurie Brown

Turned Taquete “circles”
Draft from Handwoven
M/J 2019
8 shaft,
8/2 unmercerized cotton

Echo-4 “Op-Art”
Inspiration Stubenitsky
“Echo and Iris”
8 shaft,
8/2 unmercerized cotton





2-1 Twill Inspiration The Stubenitsky Code
8 shafts, 8/2unmercerized cotton

