



# PORTLAND HANDWEAVERS GUILD

---

*November 12, 2020*

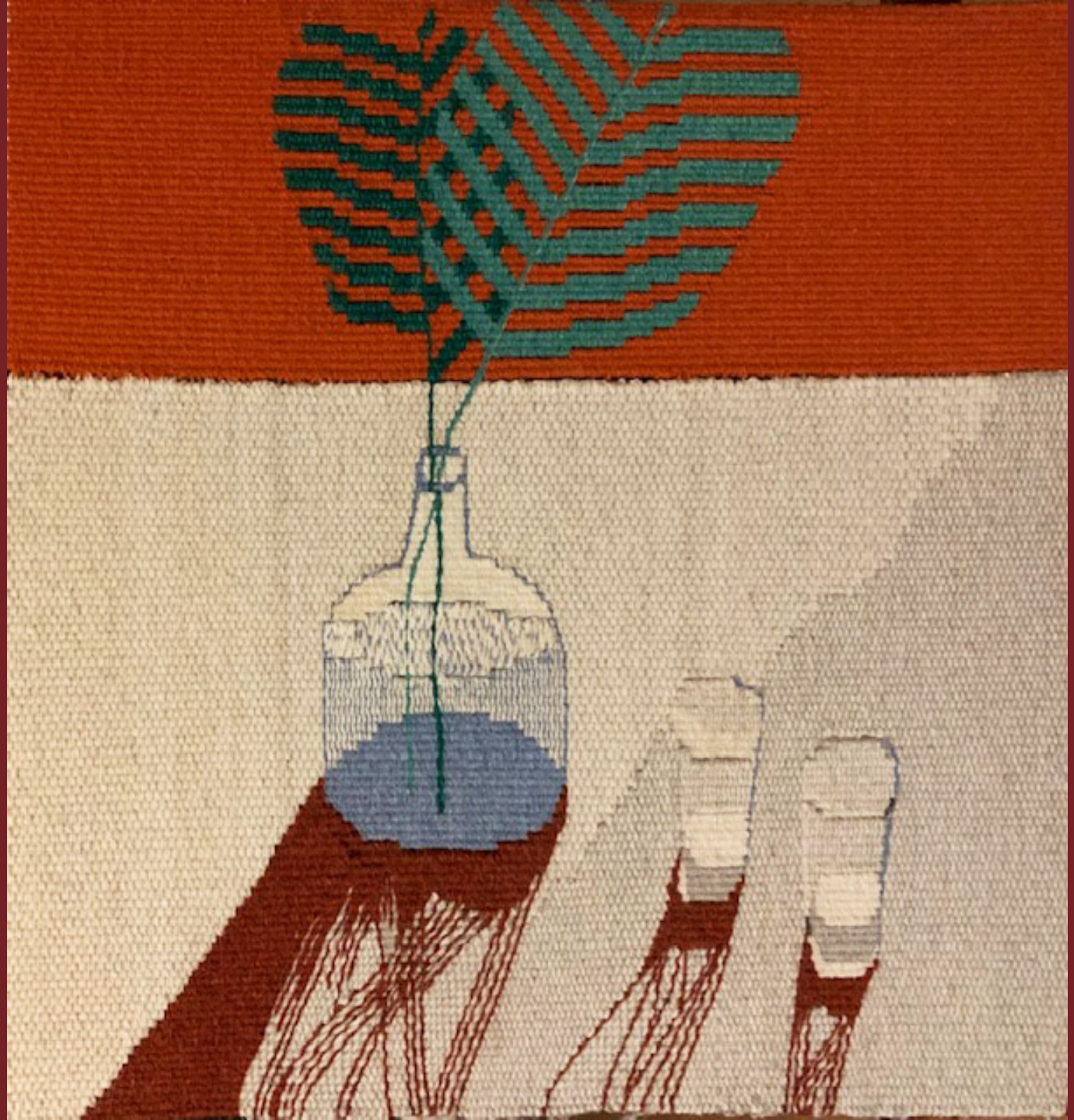
*Members Projects*

# Amy Began The Palma

Tapestry 20" x 20"

Cotton warp and wool weft.

Inspiration →



Chris Rossi

Table Mat



Warp is hand dyed from earlier this summer

Weft is strips of dyed silk/cotton fabric ,



Christine Thomas-Flitcroft

Mug Rugs

Woven on my lost Pond Loom

Yarn is hand-spun Lincoln wool that was spun on the "Dealgan" Scottish spindle in picture

# Debbie Ellis

## Woven Shibori

Woven on a rigid loom

Warp and weft are Jagger spun 50/50 merino/silk

Navy blue acid dye used.



## Violet Protest Project

Tapestry, Saori,  
Clasped weft,  
& Pick n Pick

[Violetprotest.com](http://Violetprotest.com)

# Debbie Gorham

Tencel and mohair.

I love the variegated Tencel with the red and black chunky weight mohair.

Plain weave with a 6-dent reed.

Sley: Tencel 4/dent & mohair 1/dent, weft Tencel

Where it passes through the mohair the scarf literally sparkles!

A very light & precise beat when weaving these Tencel and mohair pieces.

It's light and airy.



# Eva Douthit

## To be Christmas Greetings Ginkgo Prints

Fall is the perfect time to print with leaves since they become saturated with tannin and give off color as well as outlines.

I have never been able to extract any color from the leaves, spring or fall. But since I love the shape of the leaves I figured out a way to get a negative print by adding fabric that gives off color when combined with metal, pressure and heat, thus using the leaf shape as a stencil.



# ★ Greta Holmstrom

## Pin Loom Woven Flower Shawls

Inspired by Zinnias, Lilies and  
Sunflowers

Woven with a fine-sett elongated  
hexagon Turtle Loom.





# Kate Dopheide

## Braided Twill Towels.

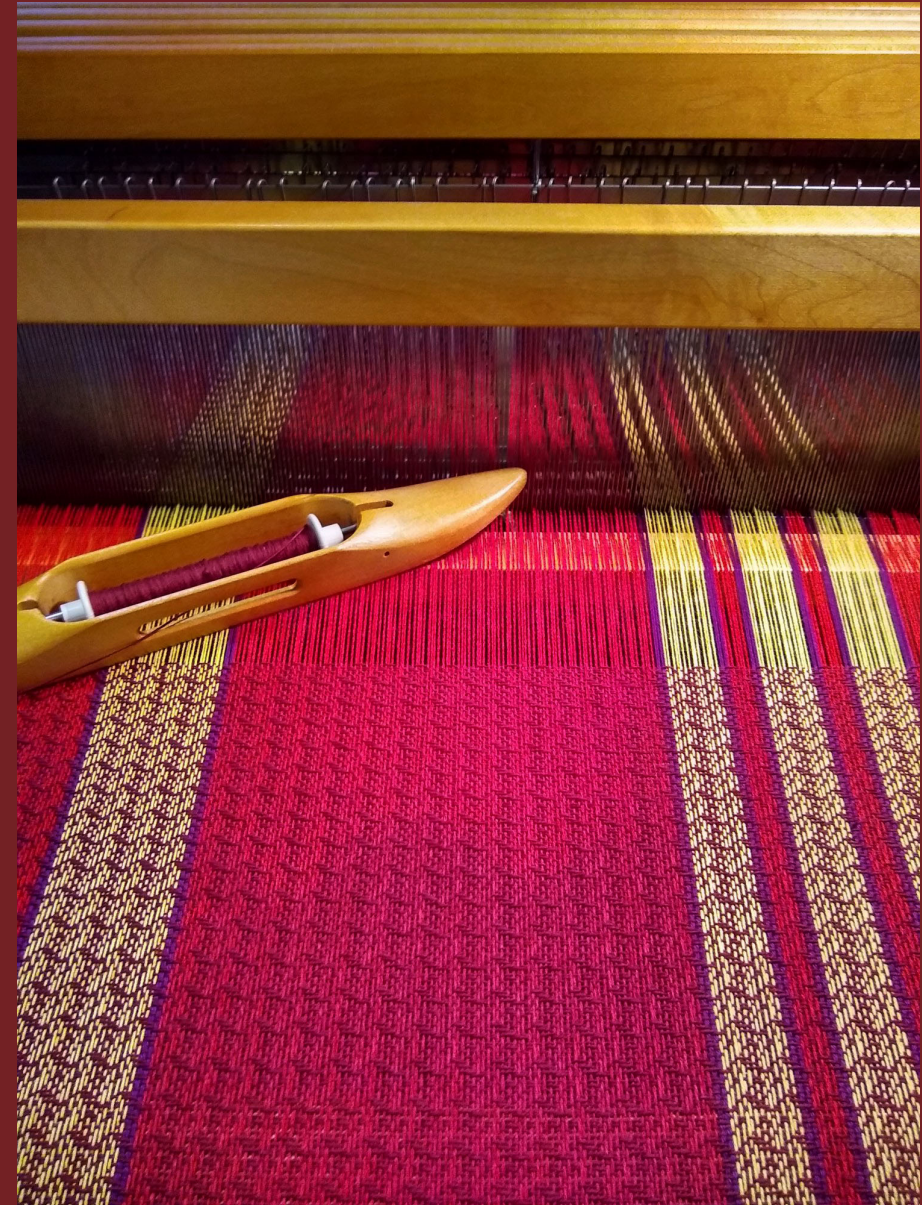


8 Harness Loom

One orange weft



One red weft





Katy Anastasi



Samplers



Woven on Tool of the  
Trade Floor Loom

Took 1<sup>st</sup> class last fall at  
MAC



Katy Anastasi

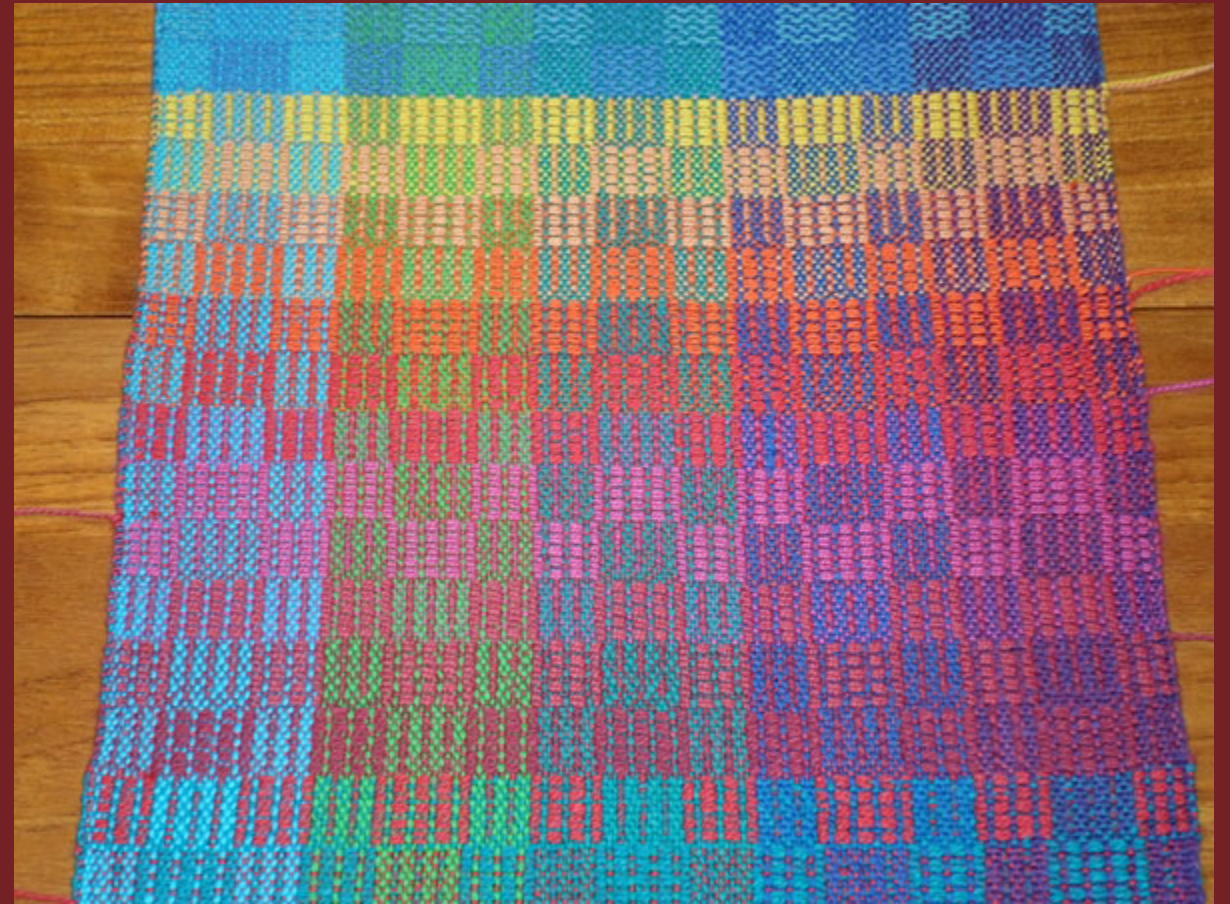
Samplers



Linda Gettmann

Sarah Jackson Color Confidence  
Zoom Workshop

Plain Weave Sampler  
Using warp colors & a variety wefts



Summer & Winter Sampler in yellows to red

# Ladella Williams

Pot Holders  
with Loopers Materials





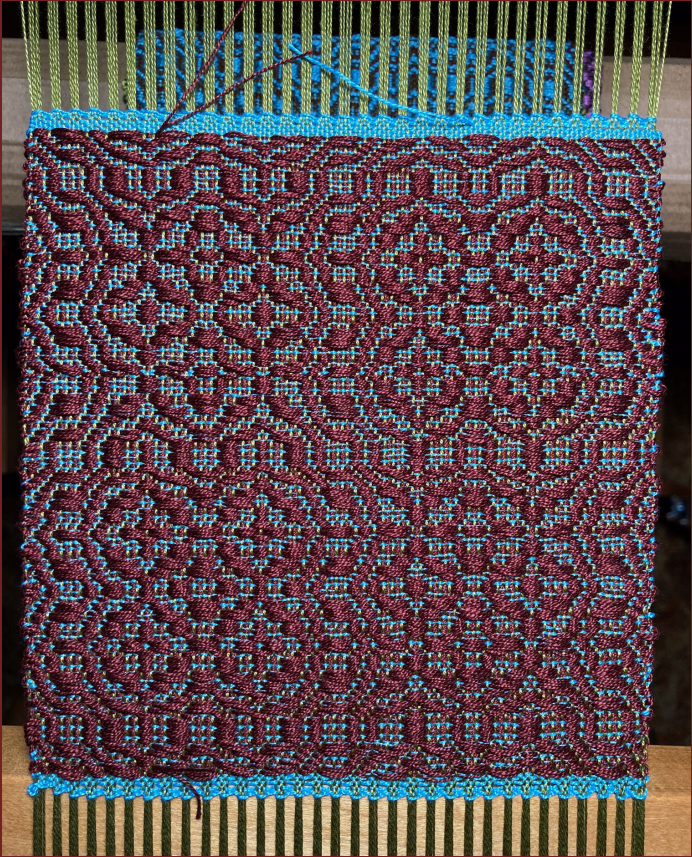
Lucy DeFranco

Beginning of a new studio  
Rogue Valley

Previous studio was lost in the  
Almeda Fire

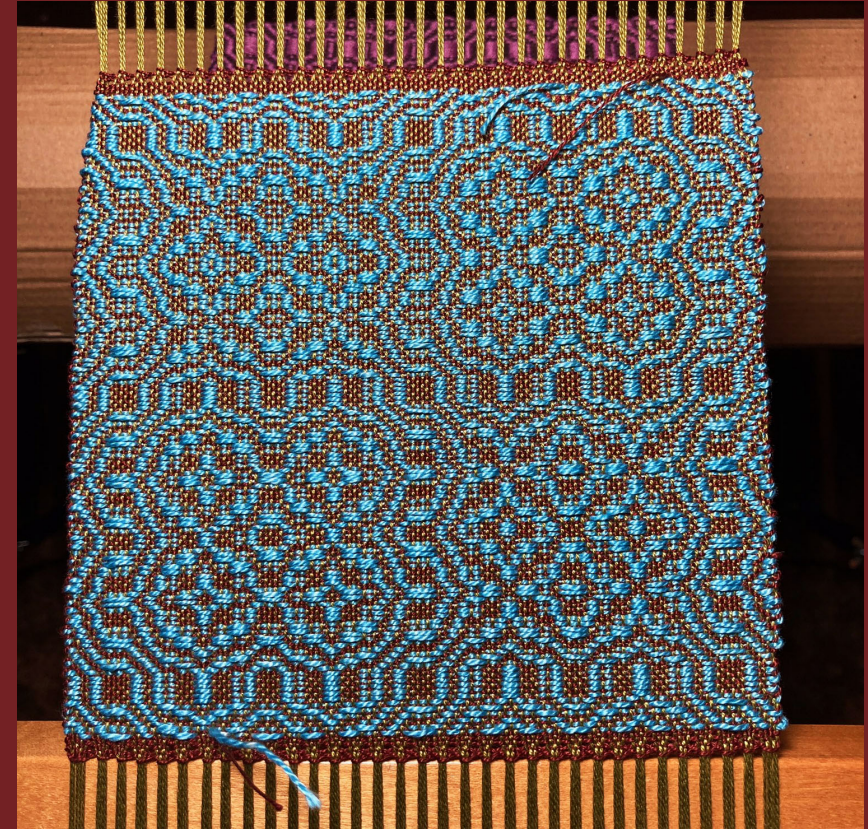
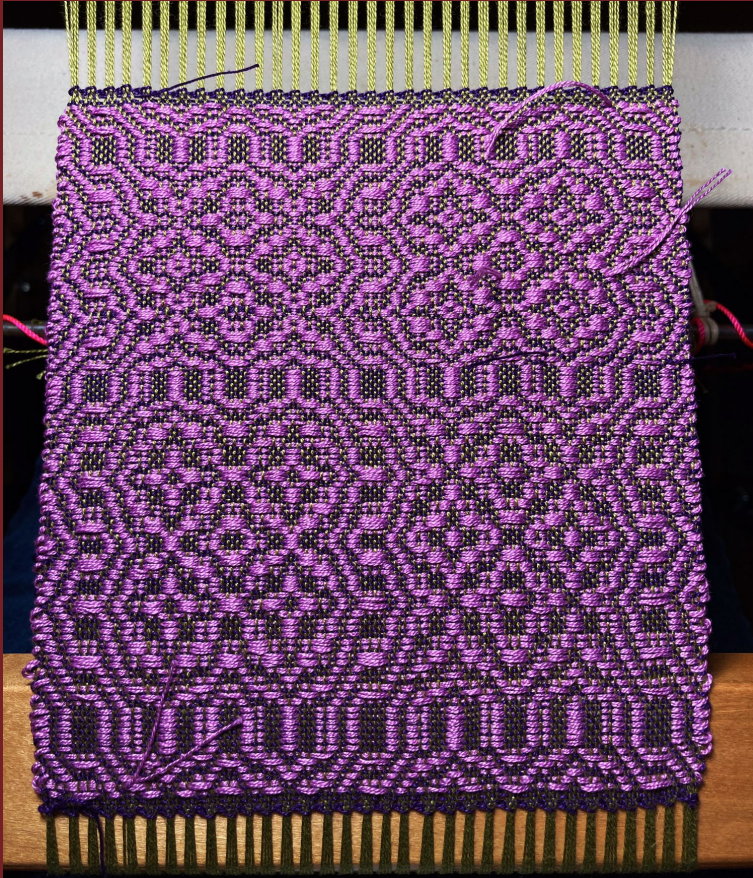
# Lynne Fitzsimmons

## 6 Discover Color Mug Rugs



Lunatic Fringe Kelp Warp

# Lynne Fitzsimmons cont.





Margaret Zepp

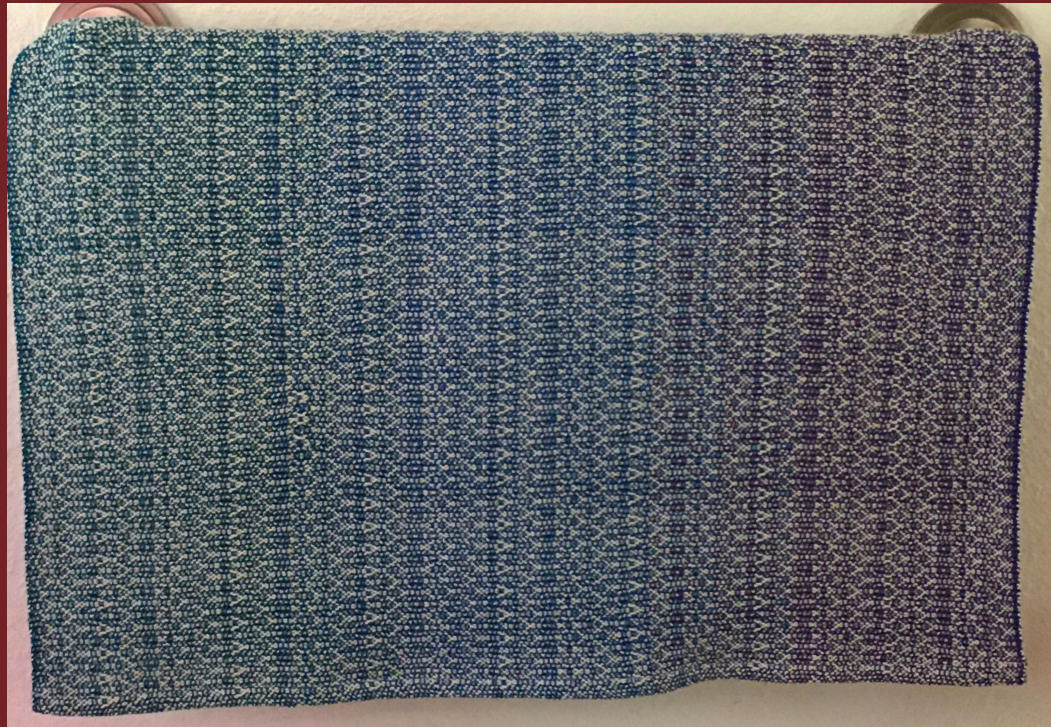
Houndtooth Bento Bag



From September October Handwoven  
8/2 cotton warp & weft at 20 epi  
18 picks per inch

# Martha Decherd

Towel  
10/2 & 8/2 Cotton



Shawl  
10/2 cotton



# Martha Decherd cont.



Scarf  
Merino & Wool



Scarf  
Cashmere, Cotton, Silk & Wool



# Nora Fairley



Crackle Mug Rugs  
5/2 Pearl Cotton

Rosepath Baby Blanket  
Plain Weave in 3/3 Cotton



# Nora Fairley cont.

## Shawl

Tencel aqua & yellowish green



Cotton Baby Blanket  
Cotton Flake

Sarah McCully-Posner

Plaid Scarf



Borgs Mora yarn  
Sett 36  
Straight twill

4 Napkins



Draft on Handweaving.net (#74461)  
10/2 cotton ~ sett of 24.  
One threading & kept the pattern  
Changed out the colors for fun.

# Sarah McCully-Posner cont.

## Deflected Double Weave Scarf



8/2 Tencel in 3  
colors

Sett 24epi

Draft modified  
from Handwoven  
Magazine  
(Jan/Feb 2007)

## Sunnyside Eggplant Scarf



ETC estate yarns stash  
100% Merino  
Superwash wool from  
Germany - Rohrspatz &  
Wollmeise

Draft on  
Handweaving.net  
(#61730)

Sett of 24epi

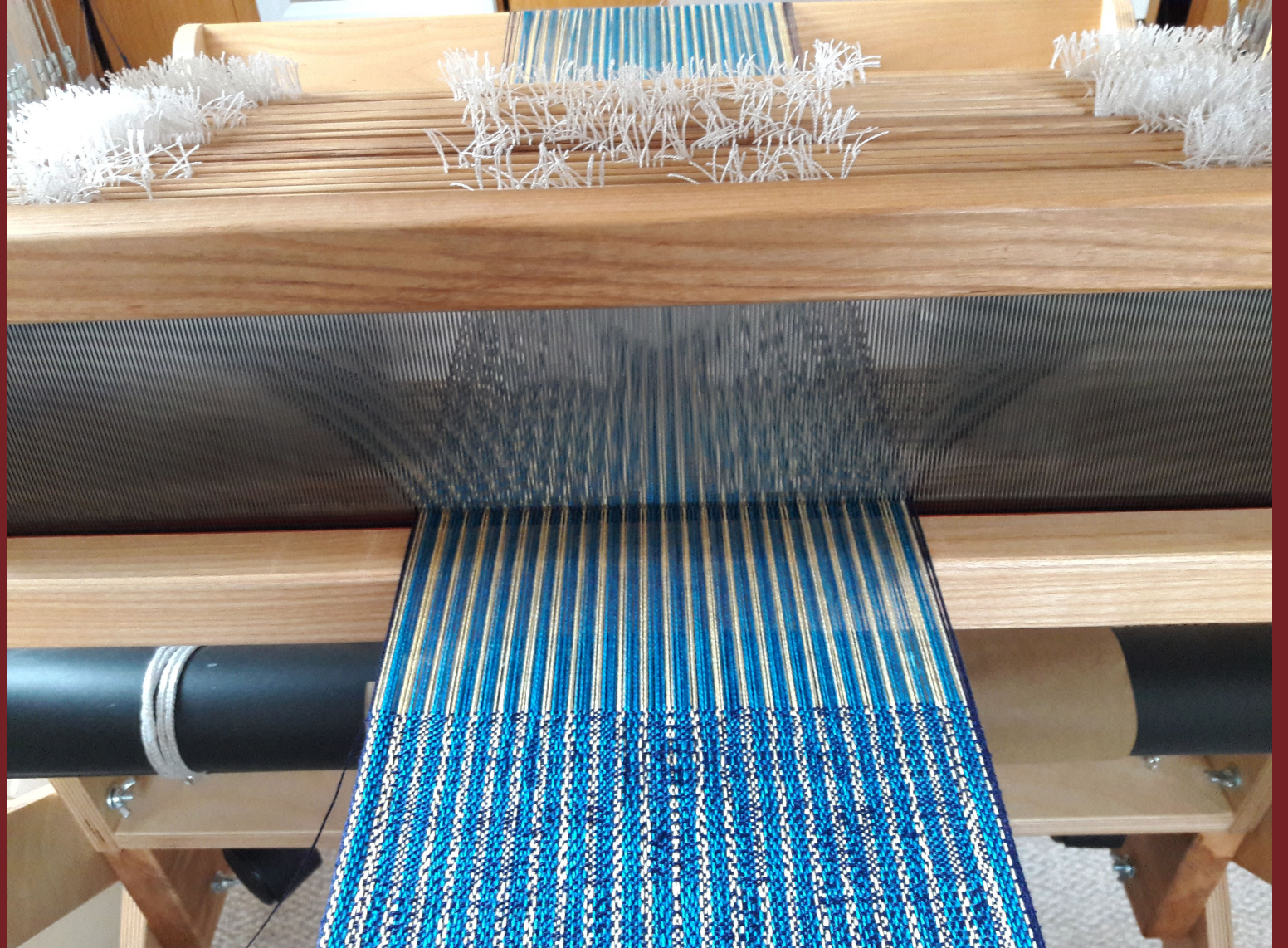
Sharon Allworth

Fabric for a Vest

20 shaft 'echo and iris' pattern

Weft solid deep navy tencel

Additional fabric will be a solid  
twill of the same







# Suzanne Kinavey Helen Style Tote for Folding Looms

Made from Repurposed  
Fabrics



Holds up to 35 lbs

3 Green Sisters

# Sylvia Emard



# Sakiori Fabric

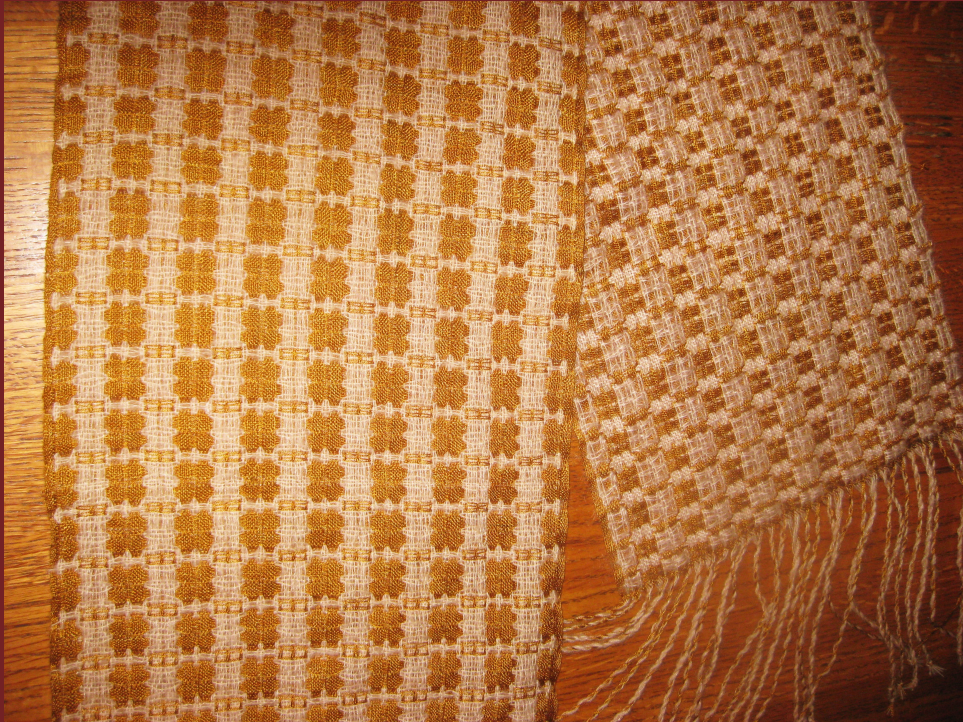
Weft alternation blue  
10/2 Tencel with 2  
strands of 20/2 violet  
Tencel  
20 epi

Warp strips of old silk  
kimono robe

To be made into a  
piece of clothing



# Teresa Mac Farland Scarfs



Deflected doubleweave in 20/2 **Tencel**  
Dyed in procion & fine mohair  
Sett 30

Deflected doubleweave in  
30/2 silk dyed in fresh  
indigo & 2/28 mohair

Weft the same except  
dyed in my indigo vat



Deflected  
Doubleweave

30/2 silk sett 36

DDW in 60/2 silk  
doubled

30/2 weft, sett 36.

# Teresa Mac Farland cont.

Silk skeins dyed in cochineal with  
different mordants and pH changes



## Autumn Towel



Deflected doubleweave

8/2 Cotton & Cottolin

Sett 30.

# Wendy Rust

## Möbius Loop Scarf



Made with Reflective &  
Cotton Yarns



Pat Zimmerman

Election Therapy Towels

Double-sided  
honeycomb cotton  
towels

Tried practically every  
color on the shelf to  
cheer myself up



# Mariola Mazur

Hand felted using wet felting technique  
Superfine Merino wool & silk



Eva Douthit

Reading & Reflection Room

2 pieces by Francisco Bautista

