



### Editor's Message



This month we have a few ideas designed to encourage you to jump into the spirit of the Guild's history which by now you have all heard will be 75 years old next year. We are one of hundreds, if not thousands of weaving guilds. But, where did they all come from? They weren't here in the early 1900's, and there weren't even many of them in 1946, when EWG started. Looking into the Guild's past can help us think about the its future. We hope you will want to be involved in the momentous event by contributing to the history display that will be shown at EWG's booth during the ANWG conference next summer. The image on the left is a tapestry that our founding president wove, Mary Elizabeth Starr Sullivan. Above are two images from *Warp and Weft*, the newsletter which Robin & Russ Handweavers published monthly for 39 years, first in Santa Barbara and then in McMinnville, OR. On the left is *Beehive*, from the May 1978 issue and on the right is the November 1958 cover. The newsletters are full of inspiration and weaving knowledge, much of it based on Russ Groff's sample weaving using the yarns that he carried in his shop. A good place to search for weaving drafts to inspire your sample to weave for the EWG booth history display. [cs.arizona.edu](http://cs.arizona.edu) – Sue Donaldson

### President's Message

Summer is here and we are too – in spirit and in action, albeit physically separated. I want everyone to know that Guild work continues, despite the constraints of the pandemic. The Board, the Sales Team and the 75th Anniversary Team have all been meeting about how to maintain the Guild, in whatever forms that will take. There is a variety of ideas. Some people are interested in small group meetings concentrating on a specific topic. The 2020 Holiday Sale *may* happen but in modified form, to ensure that all of us can safely participate if we choose to. For next summer our hopes are high. We want to be able to celebrate our Guild's 75<sup>th</sup> anniversary and participate in the ANWG Conference in Salem. Since 75 years is a Diamond Anniversary, consider how you could incorporate a diamond pattern or theme when you plan your exhibit and sale projects. There will be more information and recommendations throughout the summer as we continue to explore all the possibilities for keeping the Guild together and productive. Thank you to everyone who has offered imaginative suggestions and ideas. Keep weaving and sharing your ideas and work! - Jeanne Remiro

Due to COVID-19, Eugene Weavers Guild will not be meeting until Jan 2021, at the earliest. The EWG Board is exploring other ways for members to interact, if they wish. In the meantime Guild members can check out books, DVD's and magazines from the library, using procedures described under *Library News*, below.



Please visit  
[www.eugeneweavers.com](http://www.eugeneweavers.com)  
 for current news

## Member News, Reminders, etc.

**DUES were due on June 30!!** If you pay annually or there is a star by your name in the 2019 *Membership Directory*, please send your check to EWG at 2750 Roosevelt Blvd., Eugene, Oregon, 97402. Please contact Jeanne Remiro ([jremiro15@gmail.com](mailto:jremiro15@gmail.com)) or Deb Meckley ([ddwmeck@gmail.com](mailto:ddwmeck@gmail.com)) if this creates a financial hardship.

**Communications Reminder:** If you have information you would like to distribute to EWG members please send it to [info@eugeneweavers.com](mailto:info@eugeneweavers.com). Thank you.

## EWG News



### **Library. Covid-19 Eugene Weavers Guild Library Procedures**

Your Guild librarians, Kathie Lindlan and Susan McConnell, have developed borrowing and return procedures which will be in effect until further notice. For everyone's safety, the library bookcases will be off-limits to everyone, except the librarians. EWG President Jeanne Remiro will act as substitute librarian if needed.

#### **Procedures:**

- One or both of us will work at the Guild library on **Mondays**.
- To check out library materials:
  - Search the library databases on the Guild's website ([eugeneweavers.com/library](http://eugeneweavers.com/library)) to find the book or item you want.
  - Email your request to **both** Kathie Lindlan and Susan McConnell
  - Include the full code, author(s) and title in your email request
  - If you request a magazine please state the **date, volume and number** of the issue you want because they are not listed in the database
- On the next Monday after receiving your email one of us will:
  - locate your requested materials,
  - check them out to you,
  - put them in a bag with your name on it and
  - put it on the table in the library area
- You will receive an email when your materials are ready to be picked up.
- **Keep the bag** and use it to return your loans to the library
- To return library materials, put your returned items (in the original bag) in the plastic tub (*Quarantine box*) on the table in front of the library bookcases. **Please return any library books, magazines, other materials that you checked out before May 2020. Put them**
- Returned materials will remain in the return/quarantine box for **1 week**.
- Remember that you can search the Library catalogue by Author, Title, Subject, or Subject Code. There are separate lists of 2019 and 2020 Additions.
- We will check in your returned items, replace the loan card as usual and re-shelve returned materials on the next workday.
- If you request something that is not available, we will put your name on a waiting list and notify you when you can pick it up at the library.

Please let us know if you have any concerns about or difficulties with these procedures. Thank you, Susan McConnell ([s\\_mcconnell@att.net](mailto:s_mcconnell@att.net)) and Kathie Lindlan ([klindlan@earthlink.net](mailto:klindlan@earthlink.net))

## Board News

The Board has been communicating via email and will continue to do so for the rest of this year. We are working on:

- A plan for how the Guild will deal with management issues, meetings, and options for other guild-sponsored events.
- a questionnaire to find out member's preferences for how we can carry on in a way that will keep everyone involved and engaged in the Guild.

There will be an online video Board meeting on August 3.

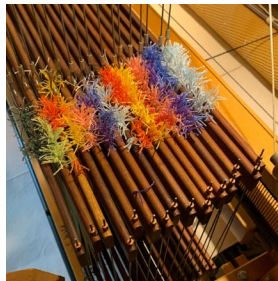
As always, please send any board member ideas, suggestions, or comments.

**NOTE:** *If you know about any excellent presentations on the Web or other venue that might be of interest to members, please pass on the information to Jeanne or Judy Sprague (to be posted on the Web).* Be sure to check out our website Gallery for the latest projects. There are some beauties. If you have some projects or favorite resources you would like to share with others, please send them to [judysprague@gmail.com](mailto:judysprague@gmail.com). Thank you for contributing!



## Tips and Tricks.

*This month's tips are from Diane Pigg and Tom Lipare*



On the left are Tom's dyed Texsolv heddles on his looms. The different colors make it a lot easier to avoid threading errors. Wish that worked with metal heddles!

On the right is Diane Pigg's handy stick-on hook, attached to her loom's castle. Very useful, simple and inexpensive.



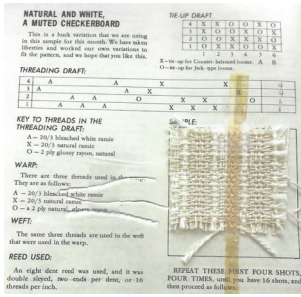
## Show and Tell

The *Weave Structures Study Group* sent a wonderful report on their amazing work, but there wasn't enough room this month. *Next month*, weavers! Please keep at it.

## Planning for the Guild's 75<sup>th</sup> Anniversary in 2021

Several people in the guild are working on samples and projects based on drafts they found in old newsletters and publications in the Guild's library.

Here is an example of a project that a member of the ANWG *Wrapped in History*



group, Jackie Worboys, has woven. Her two table runners are based on a draft published in Russell Groff's *Warp & Weft*, (Dec. 1968. Vol. XXI, #10). She wove a huck variation of *Natural and White, a Muted Checkerboard*, originally woven in ramie and rayon. Jackie chose 3/2 cotton, natural linen (labelled Bouclin) and white linen. The latter two have a grist similar to 8/2 cotton.



*I found this pattern a delight to weave; the difficulty came in the finishing wash. I had chosen to hemstitch the ends and leave a small fringe; in hindsight, I should have hemmed the pieces because*

*the Bouclin unraveled somewhat in my careful, but not cautious enough wash. This mysterious yarn was the greatest challenge.*

In case you haven't found a draft for a sample to weave for the Guild booth, here is one from *Warp & Weft*, called *No Gas*:

**Warp**

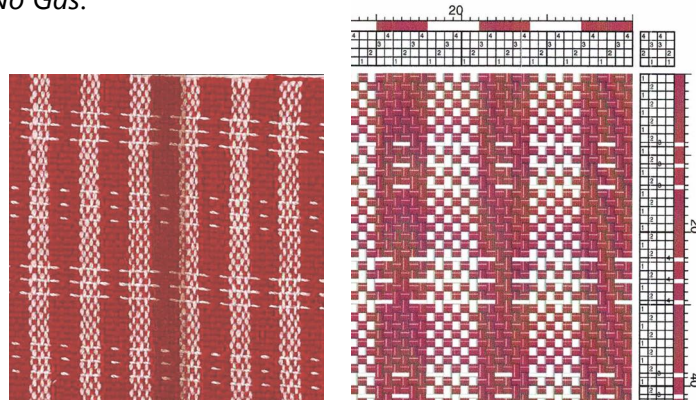
1. Red, 10/2 mercerized cotton
2. White, 10/2 mercerized cotton

**Weft**

Same as Warp

30 epi

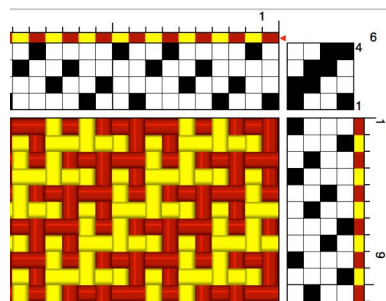
15 dent reed, 2 ends per dent



Or, what about this one?

**Shuttle Craft** Vol XXXVI, # 8-9, Aug-Sept 1959

*Exploring the Shadow Weave. Experiment #3. By Mary Black*



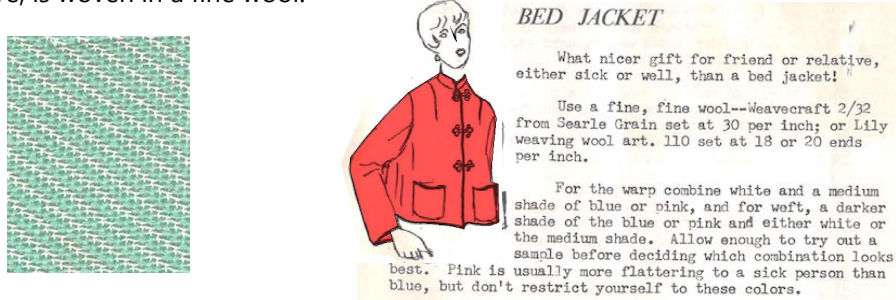
*Study this treadling for a moment and note that (1) the dark threads are woven on the twill succession 1,2, 3, 4, and (2) the light threads are woven on the twill succession 4, 1, 2, 3, the two sets weaving their own twill succession yet interlacing one set with the other. The resulting weave was quite*

*unusual, one which we had never seen before. It ran on a 45° twill angle with a distinct dark row alternating with a distinct light row, the threads crossing each other in a manner suggestive of feather stitching. Neither Mrs. Atwater nor Mrs. Tidball mentioned this feature in particular, so*

Treadle	1	dark	3	dark
	4	light	2	light
	2	dark	4	dark
	1	light	3	light

we would feel that we have stumbled onto something new which can be developed further. This peculiar crossing of the threads shows up in some of the Gano samples but not to the extent that it does when a twill succession threading is used. This weave should be especially suitable for wool – particularly blankets, afghans, baby blankets, car robes, housecoats and bed jackets using wool of a size suitable for the use of the material, e.g. very fine wool (2/32 Weavecraft from Searle) for bed jackets set at 30 to 32 threads per inch, and for afghans 3-ply wool set rather loosely in the reed. Our experimental sample, woven of the 4/8 cotton has a bias or diagonal pull, but returns to shape immediately the strain is released. It is firm, though not hard fabric, with a cellular quality.

**Bed jacket, anyone?** This sample uses the same threading and treadling but, as described above, is woven in a fine wool.



Or what about making a lovely handbag from your sample warp leftovers?

If you want to combine weaving with your woodworking skills, maybe this waste basket will be just the décor item you need.



Contact Sue Donaldson ([sued1911@mac.com](mailto:sued1911@mac.com)) if you want to contribute to the Guild history project. I would love to have your help!

### 75<sup>th</sup> Celebration Update:

**Open Show Schedule Change:** Our 75<sup>th</sup> celebration Open Show will consist of three exhibitions, each of which will be up for one month starting June 1 and ending on August 31, 2021. In September our history project will be on display, including a retrospective show of historical items by current and past members. All members are invited to submit work (one or more items), which will be due in Spring 2021. So far, almost 30 members have committed to submitting at least one item for the open show. Emily will contact those members starting this fall, asking for status report as well as hanging and special requirements. If you are not on the list and want to be, please contact her at [emgl6529@aol.com](mailto:emgl6529@aol.com).

**Rules:** Show rules are as follows.

- Must have been completed after 2017
- Must not have been previously shown
- Be original work
- Be ready to hang

**75<sup>th</sup> Celebration Market Place:**

The Committee is exploring the idea of a small *Market Place* during the Open Shows. Only a few items of each type would be on sale at a time but items would be rotated frequently (maybe as often as weekly). This would be a joint effort with ETC. The Guild would be responsible for check in and set up; ETC would process the sales. Please contact Emily Guiland-Larson at [emgl6529@aol.com](mailto:emgl6529@aol.com) if you have additional thoughts about the idea or would like to assist.

**2020 Holiday Sale Update:**

The Guild Sales Team is evaluating options for our Holiday Sale and Celebration in November. These range from a full celebration to cancelation. Some of the more workable options include: 1) not having demonstrations and refreshments, which would allow us to expand our space for social distance requirements; 2) installing plexiglass barriers; 3) limiting the number of shoppers at one time; 4) setting up directional pathways. We will not commit to a specific plan until the last minute and therefore will not advertise (if needed) until the fall. We will make a final decision in late August or September. Whatever the decision, we hope that everyone will continue weaving and making - knowing that we will then have a Super Celebration and Sale in 2021. If you have comments or questions please contact Emily at [emgl6529@aol.com](mailto:emgl6529@aol.com).

**FOR SALE**

**Wooden Rug Shuttles** in good condition:..

All 8 for \$125. (*new 22" shuttles are \$41 ea.*)

Contact Bonnie Albright:

[wirewoven@gmail.com](mailto:wirewoven@gmail.com) or 541-760-5458

3 – 21 ½" x 3"

1 - 23" x 2"

2 - 24" x 2"

1 - 24" x 2 ¼ "

1 - 18" x 2 ½ "



13 yard **Warping Board** with cross dowels. 38" square with sturdy long 6 in. pegs. \$30. Please contact **Pat Cane** at 541.747.7676.

Also, Pat would like to buy **large** cone of **natural 5/2 unmercerized** cotton yarn (6/2 would be acceptable).

**Regional News and Calendar**

**Weaving Guilds of Oregon (WeGO)** is a state-wide collaboration of guilds that encourages weaving through education.

**ANWG 2021**

2021 ANWG Conference  
June 7 – 12, Willamette  
University, Salem, OR

Please visit the website for details and conference updates ([ANWG](#)). If you want to receive information directly, you can subscribe to the [conference blog](#).

Please consider volunteering at the conference. There are many options, including being a classroom helper or assisting with the

Fashion Show. Karen Sieradski is the coordinator and will need five or six volunteers to work with her behind the scenes. Please contact Karen ([karensieradski@comcast.com](mailto:karensieradski@comcast.com)). For all the other volunteer opportunities please contact Ila McCallum, Events/Activities Chair ([ilasqs@web-ster.com](mailto:ilasqs@web-ster.com)).

Weaving Guilds of OREGON



The WeGO Traveling Show committee is planning a show in 2023. It will run from January 2023 to January 2024 and will showcase Oregon weavers' finest works of art. Several awards are available. There will be more information as the show draws nearer. Start working on your submissions now!

### Regional Events and Shows

*Aurora Colony Handspinners Guild Annual Fiber Fair and Spin-In* – TBA. Clackamas Community College, Oregon City.

*Fiber Fusion Northwest* - Oct.16-17, 2020 - ONLINE only

*Fibermania* – Nov 7-8, 2020. Jackson Co. Fairgrounds, Central Pt., OR.

*Knot Another Fiber Festival* TBA. The Dalles, OR.

*Link River Festival* - TBA (see WeGO website). Klamath Falls.

*Newport Spin-In* – 2021 TBA . Newport Middle School, 825 NE 7<sup>th</sup>, Newport.

*Oregon Flock & Fiber Festival* – Sept. 26-27<sup>th</sup>, 2020. **Cancelled**

*Shaniko Wool Gathering* – TBA (see Facebook posting)



**Convergence has been postponed until July 2022.** Please check HGA's webpage for the most up-to-date information ([HGA Convergence](#))

### STUDY GROUPS

#### **Natural Dye and Ethnic Textile Study Group**

This group is dedicated to the use of natural dyes on natural fibers suitable for weaving, with an emphasis on locally available, organic, and sustainable dyestuffs. Our explorations include dyeing on yarn and cloth and traditional ethnic dye techniques of shibori, ikat, and katazome. Meeting times vary and attendance in this study group is limited by the size of the dye studio. Contact Diane Pigg ([tdpigg@yahoo.com](mailto:tdpigg@yahoo.com)) for more information.

#### **Scandinavian Weaves Study Group (SCAN)**

This group studies the weaving traditions of the Scandinavian countries - Denmark, Iceland, Norway, and Sweden - their neighbor Finland, and the Sami, the indigenous peoples of northern Scandinavia and Russia. Contact Kathie Lindlan ([klindlan@earthlink.net](mailto:klindlan@earthlink.net))

### Fiber Challenge Study Group

The Fiber Challenge Study Group encompasses all fiber arts, including weaving, braiding, dyeing and printing, felting, sewing and stitching, spinning, knitting, crochet, macramé, and book and paper making. At the beginning of each calendar year we choose a new topic to address using any of these techniques. Contact Joan Swift ([joanswift7@gmail.com](mailto:joanswift7@gmail.com)) for more information.

### Weave Structures Study Group (WSSG)

WSSG is a learning community devoted to broadening the understanding of weave structures through education, practice, and group sharing. Their 2019/2020 focus is on Double Weave. Contact Cathy Barnes ([cbarnes@uoregon.edu](mailto:cbarnes@uoregon.edu))

### Inkle Weaving Study Group

This group is dedicated to sharing the basics of narrow-band inkle weaving, surface design ideas, the use of supplementary heddles, and explorations of color interactions. Contact *Leslie Verts* ([carver@proaxis.com](mailto:carver@proaxis.com)) for more information.

**What's Happening at  
Eugene Textile Center**  
2750 Roosevelt Blvd. Eugene Oregon  
[eugenetextilecenter.com](http://eugenetextilecenter.com)



**Classes** – Check with ETC for the latest news about classes.

#### July 2020

- Beginning Weaving
- Intro to Fiberworks PCW
- Mushroom Dyeing
- Color Play on Cotton
- Beginning Spinning
- Intro to Feltmaking
- Needle Felting Songbirds
- Ecoprint
- Beyond Plain Weave on the Rigid Heddle



#### August 2020

- Intro to Feltmaking
- Eco Print
- American Maid Washcloths
- Beginning Spinning
- Four Shaft Rep Weave
- 2-Day Learn to Weave
- Needle Felting Unicorns
- Color Theory from the Yarn Circle
- Intro to Natural Dyeing
- Weave a Shawlette in a Day
- Next Level Spinning

#### September 2020

- Intro to Feltmaking
- Beginning Spinning
- Drawloom Weaving
- Understanding & Tying the Countermarch
- Swedish Art Weaves
- Local Color
- Eco Print



# Thrums

Eugene Weavers' Guild  
2750 Roosevelt Blvd  
Eugene OR 97402



## Our Guild "Staff" for 2020 /2021

### *Elected Officials*

President	Jeanne Remiro
Past President	Sue Donaldson
Secretary	Greta Heintz
Treasurer	Debbie Meckley

### *Committee Chairs*

Demonstrations	Barbara Richmond
Equipment	Suzie Liles
Exhibits	Marilyn Robert
Grants	Marilyn Robert & Diane Pigg
Historian	Sue Donaldson
Hospitality	LauraRose Hisrich
Library	Susan McConnell & Kathie Lindlan
Membership	Ditte Lokon
Newsletter	Sue Donaldson & Pat Cane
Programs	Joan Swift
Publicity	Judy Sprague
Sales	Emily Guillard-Larson
Special Events	Emily Guillard-Larson
Study Groups	Cathy Barnes
Workshops	<b>OPEN</b>
Yearbook	Brenda Gilmer
ANWG Rep	Karen Sieradski
WeGO Rep	Sarah Mostkoff