



President's Message

Thrums is usually published during the months when the Guild meets, but this year we will publish it each month until regular Guild meetings resume. It is one way that we can all keep in touch with Guild events and activities. And, don't forget to visit our website, www.eugeneweavers.com. See Judy Sprague's post about some of the offerings available when you do. It is worth registering as a member because it will give you access to the membership directory. Thank you to Sue Donaldson, our newsletter editor, and Judy Sprague, our website editor, for volunteering their time to help keep us connected during the time when we can't meet in person. Hope you find some new venues to enjoy! - *Jeanne Remiro*



Member News, Reminders, etc.

DUES were due on June 30 If you haven't already done so, please send your check to EWG at 2750 Roosevelt Blvd., Eugene, Oregon, 97402.

Please contact Jeanne Remiro (jremiro15@gmail.com) or Deb Meckley (ddwmeck@gmail.com) if this creates a financial hardship.

Communications Reminder: If you have information you would like to distribute to EWG members please send it to info@eugeneweavers.com. Thank you.

EWG News



Library. New Additions to the Library

Many thanks to the generous weavers and instructors who have donated books and magazines to the EWG library this past year: the late Dee Brown, Nancy Hoskins, Barbara Setsu Pickett, Marilyn Robert, and Leslie Verts. You can find recent additions to the library on the Guild website, under the Library menu: **2020 Additions** and **2019 Additions** (<https://eugeneweavers.com/library>). Many thanks to Judy Sprague, the EWG webmaster, who keeps these and the other library listings on the website — **Author, Title, Subject, Subject Code**—up-to-date for us. By the way, Judy reports that since 2015 our library holdings have increased by 347, from 518 to 865.

Here are the latest additions:

Leslie Verts donated these three books that members had selected for purchase:

Mummies of Urumchi. E W Barber. 1999. S3 B

Prehistoric Textiles. E W Barber. 1991. S3 BAR

Old Swedish Weavings from North to South. Doris Wiklund. 1996. J3 WI

Members selected the following:

Weaving on 3 Shafts. Erica de Ruitter. 2017 B2 RU

Yarn-i-tec-ture. Jillian Moreno. 2016. N MO

Guild librarians selected these books at discounted prices from ETC:

Wild Color (revised and updated). Jenny Dean. 2010. *I DE*
Weaving Shaker Rugs. Mary Elva Congleton Erf. 2015. *C4 ERF*
Easy Weaving with Supplemental Warps. Deb Essen. 2016. *A7 ES*
Weaving Patterned Bands. Susan J. Foulkes. 2018. *D FO*
Respect the Spindle. Abby Franquemont. 2009. *N FR*
Tapestry Weaving. Kirsten Glasbrook. 2002. *A5 GL*
Color by Accident. Ann Johnston. 1997. *I JN*
Wool, the Practical Spinner's Guide. Kate Larson. 2015. *N LA*
Color in Spinning. Deb Menz. 2005 *N ME*
Inventive Weaving on a Little Loom Syne Mitchell 2015. *P MI*
Doubleweave (revised and expanded). Jennifer Moore. 2018. *A6 MOO*
Woven to Wear. Marilyn Murphy. 2013. *U MU*

Whew! We have spent all the money allocated in the Guild budget for 2019/2020 library books. Happy reading and researching, everyone!

Covid-19 Eugene Weavers Guild Library Procedures

The following borrowing and return procedures which will be in effect until further notice. For everyone's safety, the library bookcases will be off-limits to everyone, except the librarians. If needed EWG President Jeanne Remiro will act as substitute librarian.

Procedures:

- One or both of us will work at the Guild library on **every other Monday**.
- To check out library materials:
 - Search the library databases on the Guild's website (eugeneweavers.com/library) to find the book or item you want.
 - Email your request to **both** Kathie Lindlan **and** Susan McConnell
 - Include the full code, author(s) and title in your email request
 - If you request a magazine please state the **date, volume and number** of the issue you want because they are not listed in the database
- After receiving your email, on a Monday one of the librarians will:
 - locate your requested materials,
 - check them out to you,
 - put them in a bag with your name on it and
 - put it on the table in the library area
- You will receive an email when your materials are ready to be picked up.
- **Keep the bag** and use it to return your loans to the library
- To return library materials, put your returned items (in the original bag) in the plastic tub (*Quarantine box*) on the table in front of the library bookcases.
- Returned materials will remain in the return/quarantine box for **2 weeks**.
- Remember that you can search the Library catalogue by Author, Title, Subject, or Subject Code.
- We will check in your returned items, replace the loan card as usual and re-shelve returned materials on the next workday.
- If you request something that is not available, we will put your name on a waiting list and notify you when you can pick it up at the library.

Thank you and please let us know if you have any concerns about or difficulties with these procedures. Susan McConnell (s_mcconnell@att.net) and Kathie Lindlan (klindlan@earthlink.net)

Web News. from Judy Sprague

Be sure to check out the latest work by some of our guild members in the Gallery on our website home page.

Works are primarily from members of our Weave Structures Study Group, including pieces by John Morse on his newly acquired 16-shaft loom, deflected doubleweave towels by Diane Pigg, and examples of Ditte Lokon's entry in the ETC *Design a Towel* competition. We'd love to share your new works too, so please send a photo and a few words describing the piece to Judy Sprague at judysprague@gmail.com. It's a great way to stay in touch during these pandemic times.

There are many other additions to our website:

The draft for Diane's deflected doubleweave towels may be found under the *Weaving Drafts* menu option.

Our 'Goodies' or *Online Resources* page has a link to **Warp and Weft** which includes a digital archive of drafts and publications as well as some older textile books, some of which can be downloaded for free. **Note:** *Warp and Weft* is the name of the website, but it is also the name of the publication that Robin and Russell Groff published for many years from their shop. Many of you are familiar with the publication and have chosen drafts from it for the EWG 75th Anniversary historic weaving sample.

Also new to the Goodies sections are links to the *Professional Weaver* podcasts and *Slow Fiber Studios* podcasts.

Our *Virtual Textile Events* section takes you to the Complex Weavers Members' Exhibition and to the Selvedge World Fair (some fees).

These are just a few examples. Explore and have fun.

Be sure to share your favorite online resources with the group by sending links to me at judysprague@gmail.com

Movie Streaming – from Diane Pigg

I ran across this movie that might be of interest - free streaming from the library - (I haven't seen it yet, saving it for next time I'm waiting in town).

A WEAVE OF TIME powerfully documents 50 years and four generations of change in one Navajo family. In 1938, noted anthropologist John Adair travelled to the Navajo reservation in Pine Springs, Arizona with a 16mm hand wind motion picture camera. There Adair met and filmed the Burnside family, creating a visual record of Navajo life in the 1930's. In an unprecedented composite, Adair's previously unseen historical footage is juxtaposed with contemporary scenes and in-depth interviews with family members 50 years later. As their story unfolds, the conflicts between past and present emerge.

In the movie, the daily struggles for family stability, education and economic survival in contemporary America challenge the existence of traditional identity including the Navajo religion, language and arts. This rich and telling film of the Burnside history becomes a complex microcosm of Navajo culture in transition and raises questions about the survival of ethnicity in 20th century America. [A](#)

[Weave of Time: Story of a Navajo Family.](#)

Virtual Guild Programs

Programs will be coming to you in the comfort of your own home via our guild's website (www.eugeneweavers.com). Just pour a cold drink, put up your feet and click on links to the programs. Our inaugural program features **Daryl Lancaster**, well known for her expertise in handmade garments from hand woven cloth, who describes her creative history. This presentation was a part of the *Virtual Artist Lecture Series* from Peters Valley School of Craft.



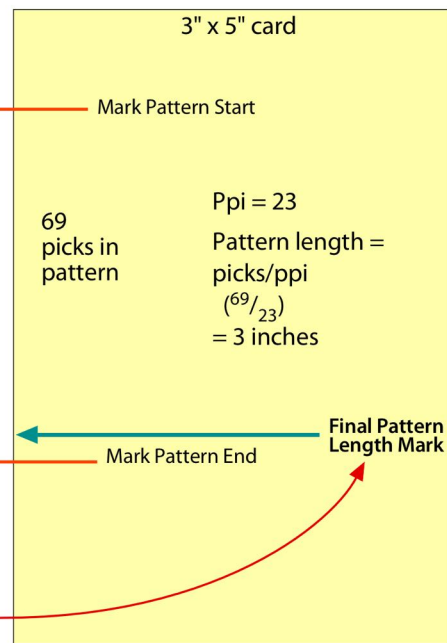
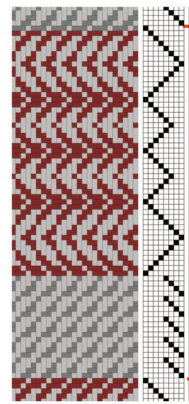
Tips and Tricks.



The following tip comes to you from Emily Guiland-Larson. If you have questions, she is willing to answer them (emgl6529@aol.com).

Monitoring picks per inch (ppi) & pattern length while weaving

- Determine your ppi
- Count the number of picks in your pattern
- Divide number of picks in pattern by ppi = length of woven pattern
- On the side of an index card, mark the beginning and end of the of pattern repeat based on your calculation
- Weave the first pattern repeat
- Loosen tension
- Place the card against the selvedge and compare the marked length to the woven length
- If they don't match, either adjust your beat or change the ppi, depending upon how it looks.
- Tighten tension and weave a few more repeats until you are satisfied with how it looks.
- On the index card, in a different color, mark the final adjusted length of one repeat.
- This gives you the desired length of the repeat under tension



Other Tips

- If you insert a fine thread at the beginning and end of the woven pattern it is easier to measure against the desired length on the index card.
- As you weave, checking the repeat length against the card can tell you if your beat is off or if you have a treadling error
- Note on your index card which direction each pick goes (left or right)
- This will alert you to a errors if you find your pick is going in the wrong direction
- Note that if the pattern has an odd number of picks the direction will change with every other repeat.

On Making Mistakes

Ditte wove 35 yards (5 warps) of fabric in her attempt to make mistake-free towels for the ETC contest. Those pesky errors on the underside of the warp are especially irritating. She tried getting under the loom to have a look, using a mirror, and unwinding the warp to see better. To no avail. Do you have any tips for her (aside from just not making mistakes in the first place)?



Board News

The Board has developed a plan for how the Guild can operate during the COVID-19 crisis:

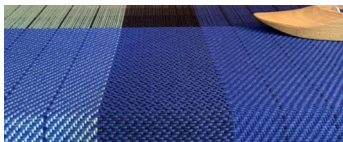
- President and Treasurer will remain in office until we are able to hold in-person elections.
- At the August 3rd Board meeting, Deb Meckley, Treasurer, will present an interim budget of necessary expenses and ask for Board approval. The full annual budget will be presented to the Board and members for approval when in-person meetings can resume.
- All in person monthly guild meetings will be cancelled until at least January 2021 or until we can safely meet in person.
- Virtual programs and presentations will be offered as they become known and available.
- Equipment and the library are available to members. See borrowing guidelines in the *Library News* section, above.
- Study Groups, monthly *Thrums* and planning for the Holiday Sale, 75th Anniversary and ANWG booth will continue.
- The Board will encourage and help facilitate informal, small interest groups and will use the results of a membership questionnaire to help focus efforts.

Show and Tell

Here are some examples of work from the *Weave Structures Study Group*. You can see more photographs of this group's work on our website's Gallery section.



These are two examples using woven shibori combined with natural dye painting that **Judy Sprague** has been working on to create images of desert wildflowers in super bloom and quaking aspens. This is a continuing journey that she has been working on for several years.



She will use this blue twill fabric in 8/4 cotton (*the last of several failed attempts*) to make her first tote bag.



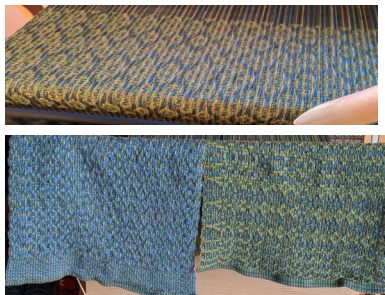
In this scarf project she used naturally dyed yarns in natural, fresh indigo and indigo, as an experiment to create a blend of monk's belt with a supplementary warp pattern. But the Monk's belt floats were too long so instead she used only the supplementary warp.



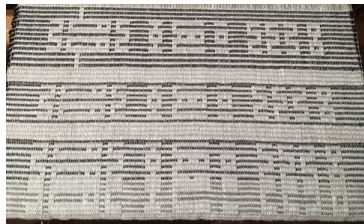
Last year **Ditte Lokon** wove two scarves that were sett too tightly – not drapery enough! So she decided to cut up the scarves (feeling a twinge of destructiveness) to make some rectangles that she used to make pockets on the front of the tote bags she made. Much better use for the scarves!



That prolific weaver, **Linda Borotrager**, has already finished this year's traditional Christmas towels. She used a summer and winter structure (which she inadvertently altered with no negative results). The fabric for the reversible hoodie (in progress) is made from double weave yardage. The biggest challenge was finding an attractive seam finish for the reversible garment.-



This sample is **Mina Ossiander's** test for a blanket pattern. It's a staggered twill in green, blue and brown cotton. She first tried 36 epi but it was so dense it was difficult to weave. She resleyed at 30 epi. Much better.



This is **Krista Richey's** project in diversified plain weave using a block pattern she designed after she took a workshop with Kelly Marshall. *I thought the blocks of color would be more solid looking, so I think I'll have to resley to open the sett. At 3/dent in a 12 dent reed, that's a lot of hemp ends. More time to listen to weaving podcasts, I guess!*



Inspired by Marian Stubenitsky's book *Double Twist*, John Morse is having fun with his new 16 shaft loom.

The first project was 8-shaft table runners in an advancing twill using 8/2 unmercerized cotton at 20 epi (*I did four different tie-ups*).

The second project was some 16-shaft wall hangings or runners (*2 different lift plans*), same set and fiber as first project. This pattern has a unique, Mid-century-feeling.



Nancy Hoskins: During the weeks of the early pandemic stay-in-place, I began weaving the first sample for a future *Complex Weavers Journal* article. I used multiple strands of metallics from my stash and some $2/12$ honey-gold silk left from a scarf and a hanging done years ago. When I ran out of the silk weft, I ordered more silk – once, twice, then three times -- until the store ran out and there was little hope of getting more. I juggled different dye lots, tied short thrums together, and wove half-size samples with the last one in gold wool. But I could not continue with the weft-faced samples for the article, so I decided to weave a silk scarf with the dyed warp from our guild dyeing party several years ago. (Thanks to Marilyn and ETC). When I picked up the silk warp from a bin, I found underneath it more of the $2/12$ honey gold silk I needed! This is the latest golden sample underway. Maybe the dyed warp later!



Planning for the Guild's 75th Anniversary in 2021

75th Celebration:

Open Show Schedule: Keep working on your projects for our 2021 75th celebration Open Show, consisting of three exhibitions and a History project display. Emily will be contacting members starting this fall, asking for status report as well as hanging and special requirements. If you are not on the list and want to be, please contact her at emgl6529@aol.com.

75th Anniversary Historic Samples

For those of you interested in weaving history and needing inspiration for a serious project – here is a picture of Tudor royal tent making. Maybe you could weave just a small tent?? Notes on upholstery weaving coming in the next *Thrums*.



2020 Holiday Sale Update:

The Guild Sales Team is continuing to evaluate options for our Holiday Sale and Celebration in November. More news to come next month.



FOR SALE

13 yard **Warping Board** with cross dowels. 38" square with sturdy long 6 in. pegs. \$30. Please contact **Pat Cane** at 541.747.7676.

Regional News and Calendar

ANWG 2021

Visit the website for details and conference updates ([ANWG](#)). If you want to receive information directly, you can subscribe to the [conference blog](#).



2021 ANWG Conference
June 7 – 12, Willamette
University, Salem, OR

Please consider volunteering at the conference. There are many options, including being a classroom helper or assisting with the Fashion Show. Karen Sieradski is the coordinator and will need five or six volunteers to work with her behind the scenes. Please contact Karen (karensieradski@comcast.com). For all the

other volunteer opportunities please contact Ila McCallum, Events/Activities Chair (ilasqs@web-ster.com).

Weaving Guilds of Oregon (WeGO) is a state-wide collaboration of guilds that encourages weaving through education.

Weaving Guilds of OREGON



The WeGO Traveling Show : It will run from January 2023 to January 2024 and will showcase Oregon weavers' finest works of art. Several awards are available. There will be more information as the show draws nearer. Start working on your submissions now!

Regional Events and Shows

Aurora Colony Handspinners Guild Annual Fiber Fair and Spin-In – TBA. Clackamas Community College, Oregon City.

Fiber Fusion Northwest - Oct.16-17, 2020 - ONLINE only

Fibermania – Nov 7-8, 2020. Jackson Co. Fairgrounds, Central Pt., OR.

Knot Another Fiber Festival TBA. The Dalles, OR.

Link River Festival - TBA (see WeGO website). Klamath Falls.

Newport Spin-In – 2021 TBA . Newport Middle School, 825 NE 7th, Newport.

Oregon Flock & Fiber Festival – Sept. 26-27th, 2020. **Cancelled**

Shaniko Wool Gathering – TBA (see Facebook posting)

STUDY GROUPS

Natural Dye and Ethnic Textile Study Group

This group is dedicated to the use of natural dyes on natural fibers suitable for weaving, with an emphasis on locally available, organic, and sustainable dyestuffs. Our explorations include dyeing on yarn and cloth and traditional ethnic dye techniques of shibori, ikat, and katazome. Meeting times vary and attendance in the group is limited by the size of the dye studio. Contact Diane Pigg (tdpigg@yahoo.com) for more information.

Scandinavian Weaves Study Group (SCAN)

This group studies the weaving traditions of the Scandinavian countries - Denmark, Iceland, Norway, and Sweden - their neighbor Finland, and the Sami,

the indigenous peoples of northern Scandinavia and Russia. Contact Kathie Lindlan (klindlan@earthlink.net)

Fiber Challenge Study Group

The Fiber Challenge Study Group encompasses all fiber arts, including weaving, braiding, dyeing and printing, felting, sewing and stitching, spinning, knitting, crochet, macramé, and book and paper making. At the beginning of each calendar year we choose a new topic to address using any of these techniques. Contact Joan Swift (joanswift7@gmail.com) for more information.

Weave Structures Study Group (WSSG)

WSSG is a learning community devoted to broadening the understanding of weave structures through education, practice, and group sharing. Their 2019/2020 focus is on Double Weave. Contact Cathy Barnes (cbarnes@uoregon.edu)

Inkle Weaving Study Group

This group is dedicated to sharing the basics of narrow-band inkle weaving, surface design ideas, the use of supplementary heddles, and explorations of color interactions. Contact *Leslie Verts* (carver@proaxis.com) for more information.

What's Happening at Eugene Textile Center

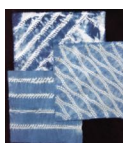
2750 Roosevelt Blvd. Eugene Oregon
eugenetextilecenter.com



Classes – Check with ETC for the latest news about classes.

August 2020

- Intro to Feltmaking
- Eco Print
- Beginning Spinning
- Four Shaft Rep Weave
- 2-Day Learn to Weave
- Needle Felting Unicorns
- Intro to Natural Dyeing
- Next Level Spinning



September 2020

- Intro to Feltmaking
- Beginning Spinning
- Local Color
- Eco Print



October 2020

- Intro to Feltmaking
- Intro to Fiberworks PCW
- Intro to Acid Dyeing
- Mixed Media Felted Scarf
- Beginning Weaving

November 2020

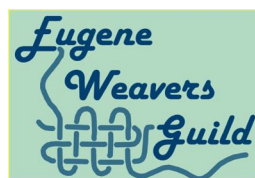
- Intro to Feltmaking
- Beginning Spinning
- Feast Art Yarns
- Stitch Resist Shibori
- Intro to Tapestry Weaving

December 2020

- Intro to Feltmaking
- Mushroom Dyeing

Thrumms

Eugene Weavers' Guild
2750 Roosevelt Blvd
Eugene OR 97402



Our Guild "Staff" for 2020 /2021

Elected Officials

President	Jeanne Remiro
Past President	Sue Donaldson
Secretary	Greta Heintz
Treasurer	Debbie Meckley

Committee Chairs

Demonstrations	Barbara Richmond
Equipment	Suzie Liles
Exhibits	Marilyn Robert
Grants	Marilyn Robert & Diane Pigg
Historian	Sue Donaldson
Hospitality	LauraRose Hisrich
Library	Susan McConnell & Kathie Lindlan
Membership	Ditte Lokon
Newsletter	Sue Donaldson & Pat Cane
Programs	Joan Swift
Publicity	Judy Sprague
Sales	Emily Guillard-Larson
Special Events	Emily Guillard-Larson
Study Groups	Cathy Barnes
Workshops	OPEN
Yearbook	Brenda Gilmer
ANWG Rep	Karen Sieradski
WeGO Rep	Sarah Mostkoff